

# THE-ICE Benchmarking Roundtable Series IX

Pauline Tang  
CEO, THE-ICE  
July 2015



**THE-ICE ISB-SB**

- One of THE-ICE value-propositions exclusively for members since 2005 in partnership with i-graduate - mandatory
- Core questionnaire covering arrival, learning, living, support, recommendation, application and choice of institution
- Students invited to feedback from March/April to June each year, report – Sep/Oct
- Benchmarking against:
  - Global Index students responded from substantial number of institutions (see example - **Appendix**)
  - Institution-specific results compared against THE-ICE Global Index (since 2010)
- Provide invaluable international benchmarking information/data for reflection & future planning

- Satisfaction averages are based on a 4 point scale
- Satisfaction % are based on: very satisfied / satisfied etc
- Recommendation averages are based on a 5 point scale
- Recommendation % are based on: actively encourage / would encourage if asked etc
- Columns are only displayed for 15 or more responses

- Individual elements with 0 (zero) responses show NA
- Elements with <15 responses show NSV (no significant value)
- Labels are shortened and standardised, and are not the exact terminology used in the questionnaire
- Derived importance based on correlation with recommendation score
- \*\*Postgraduate students only
- \*% appears where value is <0.5%



# Findings

## ISB–SB Findings (sample slides)

### Benchmarking with fellow member institutions

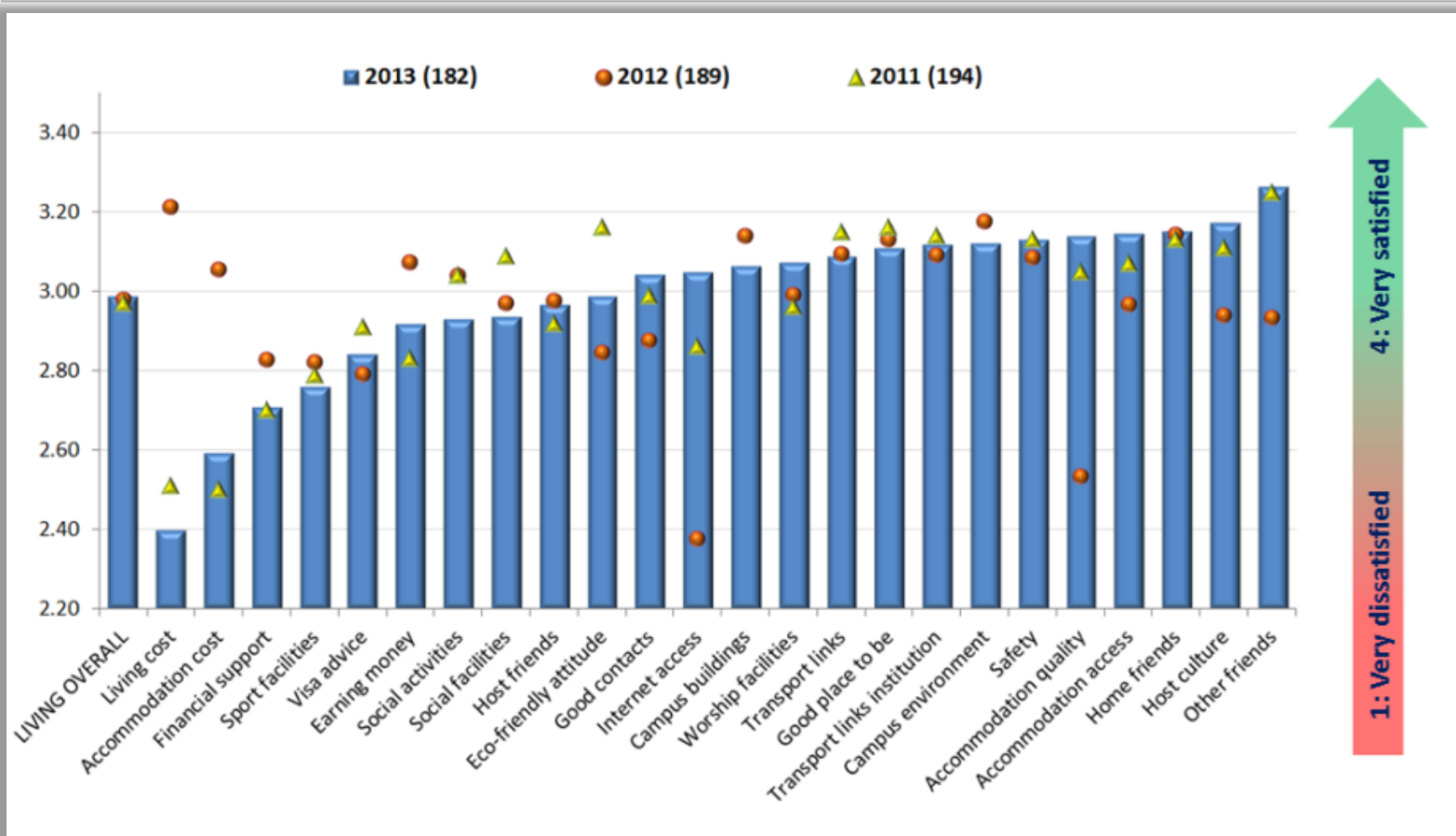
| Australian |      |      |      |      |      |      |      |      |      | THE-ICE    | ISB - LEARNING Satisfaction | Average Satisfaction |         | International |      |      |      |      |      |      |      |      |      |
|------------|------|------|------|------|------|------|------|------|------|------------|-----------------------------|----------------------|---------|---------------|------|------|------|------|------|------|------|------|------|
| 5          | 7    | 8    | 9    | 10   | 11   | 12   | 15   | 16   | 21   | Importance | Learning elements           | Global ISB           | THE-ICE | 1             | 2    | 3    | 4    | 6    | 14   | 17   | 18   | 19   | 20   |
| 2.93       | 2.84 | 3.10 | 3.06 | 2.90 | 2.86 | 3.00 | 3.15 | 2.84 | 3.25 |            | LEARNING OVERALL            | 3.01                 | 2.96    | 3.04          | 2.89 | 2.86 | 2.96 | 3.18 | 2.81 | 2.73 | 3.19 | 3.16 | 3.31 |
| 3.35       | 3.21 | 3.38 | 3.23 | 3.36 | 3.41 | 3.33 | 3.24 | 3.57 | 3.05 | 21%        | Academics' English          | 3.27                 | 3.19    | 3.29          | 3.13 | 3.05 | 3.03 | 3.28 | 2.68 | 2.93 | 3.33 | 3.41 | 3.42 |
| 3.03       | 3.01 | 3.04 | 3.06 | 3.23 | 3.05 | 3.23 | 3.07 | 3.00 | 3.16 | 23%        | Marking criteria            | 3.00                 | 2.95    | 3.15          | 2.94 | 2.69 | 2.91 | 3.24 | 2.77 | 2.29 | 3.13 | 3.09 | 2.82 |
| 2.94       | 3.02 | 3.08 | 3.04 | 3.00 | 3.14 | 3.14 | 3.12 | 3.04 | 3.15 | 27%        | Assessment                  | 3.08                 | 2.95    | 3.03          | 2.96 | 2.67 | 3.01 | 3.14 | 2.90 | 2.64 | 3.25 | 3.07 | 2.95 |
| 2.76       | 2.85 | 3.01 | 3.13 | 2.88 | 3.10 | 2.79 | 3.07 | 3.41 | 3.00 | 36%        | Careers advice              | 2.80                 | 2.88    | 3.10          | 2.82 | 2.60 | 2.99 | 3.27 | 2.50 | 2.64 | 3.23 | 3.13 | 3.00 |
| 3.08       | 2.92 | 3.13 | 3.14 | 2.94 | 3.19 | 3.07 | 3.07 | 3.04 | 3.00 | 40%        | Course content              | 3.14                 | 3.06    | 3.09          | 3.04 | 3.00 | 3.04 | 3.38 | 3.00 | 2.57 | 3.25 | 3.26 | 3.36 |
| 3.08       | 3.15 | 3.15 | 3.09 | 3.00 | 3.27 | 3.27 | 2.94 | 3.43 | 3.08 | 21%        | Class size                  | 3.08                 | 3.17    | 3.28          | N/A  | N/A  | 2.86 | 3.28 | 3.48 | 2.86 | 3.44 | 3.36 | 3.68 |
| 3.10       | 3.03 | 3.09 | 3.22 | 3.23 | 3.18 | 2.94 | 3.18 | 3.25 | 3.21 | 32%        | Expert lecturers            | 3.26                 | 3.08    | 3.22          | 3.10 | 2.85 | 2.92 | 3.38 | 2.94 | 2.93 | 3.44 | 3.37 | 3.48 |
| 2.84       | 2.98 | 3.13 | 3.09 | 2.71 | 3.00 | 2.86 | 3.13 | 3.25 | 3.00 | 37%        | Employability               | 2.90                 | 3.00    | 3.22          | 2.96 | 2.85 | 3.03 | 3.45 | 2.68 | 2.69 | 3.13 | 3.21 | 3.36 |
| 2.99       | 2.96 | 3.06 | 3.23 | 3.10 | 3.18 | 3.00 | 3.17 | 3.17 | 3.10 | 36%        | Good teachers               | 3.12                 | 3.00    | 3.20          | 3.02 | 2.71 | 3.04 | 3.36 | 2.81 | 2.64 | 3.13 | 3.31 | 3.28 |
| 3.00       | 2.89 | NSV  | 3.08 | 3.14 | NSV  | N/A  | 3.00 | NSV  | 2.91 | 37%        | Topic selection             | 3.14                 | 3.01    | 3.08          | N/A  | NSV  | 3.00 | N/A  | N/A  | N/A  | N/A  | NSV  | NSV  |
| 3.26       | 2.92 | 3.22 | 3.05 | 3.43 | 3.27 | 3.06 | 2.90 | 3.33 | 3.11 | 22%        | Online library              | 3.24                 | 3.09    | 3.26          | 3.02 | 3.03 | 2.90 | 3.18 | 3.07 | 2.93 | N/A  | 3.40 | 3.15 |
| 3.13       | 3.08 | 3.09 | 2.89 | 3.45 | 2.95 | 2.87 | 2.77 | 2.25 | 3.00 | 27%        | Physical library            | 3.20                 | 3.05    | 3.44          | 3.16 | 2.92 | 2.96 | 3.42 | 2.32 | 2.85 | 3.25 | 3.38 | 3.29 |
| 3.26       | 3.08 | 3.15 | 3.11 | 3.22 | 3.30 | 3.20 | 3.22 | 3.43 | 3.16 | 27%        | Learning support            | 3.15                 | 3.12    | 3.16          | 3.02 | 3.03 | 3.09 | 3.22 | 3.10 | 2.86 | 3.23 | 3.19 | 3.17 |
| 3.02       | 3.07 | 3.16 | 3.08 | 3.10 | 3.05 | 2.87 | 3.06 | 3.21 | 3.15 | 29%        | Learning spaces             | 3.16                 | 3.13    | 3.37          | 2.98 | 3.12 | 3.00 | 3.25 | 3.00 | 3.00 | 3.63 | 3.47 | 3.60 |
| 2.96       | 3.02 | 3.29 | 2.95 | 3.25 | 3.07 | N/A  | 2.98 | 3.17 | 3.17 | 27%        | Laboratories                | 3.18                 | 3.09    | 3.30          | 3.09 | 3.02 | 2.90 | 3.14 | N/A  | N/A  | N/A  | 3.52 | NSV  |
| 3.17       | 3.13 | 3.31 | 3.12 | 3.05 | 3.35 | 3.00 | 3.18 | 3.14 | 3.10 | 25%        | Language support            | 3.13                 | 3.15    | 3.22          | 3.13 | 3.10 | 2.99 | 3.29 | 2.91 | 2.93 | 3.67 | 3.44 | 3.21 |
| 3.12       | 3.26 | 3.35 | 3.14 | 2.96 | 2.86 | 3.33 | 3.13 | 3.21 | 2.90 | 21%        | Multicultural               | 3.21                 | 3.21    | 3.29          | 3.18 | 3.20 | 3.10 | 3.34 | 3.13 | 3.17 | 3.50 | 3.49 | 3.29 |
| 3.10       | 2.78 | 2.93 | 3.06 | 3.09 | 3.00 | 2.73 | 3.00 | 3.17 | 2.92 | 39%        | Course organisation         | 3.03                 | 2.87    | 3.08          | 2.95 | 2.56 | 2.97 | 3.33 | 2.56 | 2.93 | 3.06 | 3.09 | 3.30 |
| 2.97       | 2.99 | 3.03 | 3.08 | 3.23 | 2.95 | 3.07 | 3.04 | 3.25 | 2.95 | 26%        | Performance feedback        | 3.02                 | 2.91    | 3.08          | 2.93 | 2.60 | 2.96 | 3.20 | 2.66 | 2.54 | 3.00 | 2.98 | 2.75 |
| 2.87       | 2.97 | 3.07 | 3.19 | 3.02 | 3.14 | 2.82 | 3.00 | 3.00 | 2.83 | 39%        | Quality lectures            | 3.08                 | 2.94    | 3.18          | 3.01 | 2.60 | 3.08 | 3.37 | 2.66 | 2.71 | 3.13 | 3.31 | 3.50 |
| 3.06       | 2.95 | 3.11 | 3.07 | 3.07 | 3.10 | 3.07 | 3.00 | 3.08 | 3.10 | 27%        | Research                    | 3.09                 | 3.02    | 3.20          | 2.94 | 2.96 | 2.99 | 3.08 | 2.72 | 2.67 | 3.20 | 3.21 | 3.18 |
| 3.11       | 2.90 | 3.00 | 3.00 | 3.30 | 3.52 | 3.06 | 2.58 | 3.21 | 3.00 | 25%        | Technology                  | 3.17                 | 2.97    | 3.21          | 3.04 | 2.81 | 2.99 | 3.14 | 2.81 | 3.00 | 3.31 | 3.03 | 3.13 |
| 3.19       | 2.92 | 3.10 | 3.01 | 3.42 | 3.36 | 2.94 | 2.85 | 3.25 | 2.89 | 28%        | Virtual learning            | 3.15                 | 3.04    | 3.25          | 3.01 | 3.00 | 2.88 | 3.26 | 2.97 | 2.83 | 3.18 | 3.12 | 2.68 |
| 2.75       | 2.84 | 3.17 | 3.21 | 2.59 | 3.00 | 2.71 | 3.08 | 3.35 | 2.75 | 24%        | Work experience             | 2.75                 | 2.97    | 3.14          | 2.96 | 2.96 | 3.00 | 3.08 | 2.53 | 2.50 | 3.27 | 3.16 | 2.84 |

## Benchmarking – institution specific findings

| THE-ICE<br>Importance | ISB - Learning Elements | Average Satisfied |            |                 | ABC<br>Global ISB | ABC<br>THE-ICE |
|-----------------------|-------------------------|-------------------|------------|-----------------|-------------------|----------------|
|                       |                         | ABC               | Global ISB | THE-ICE (1,707) |                   |                |
|                       | LEARNING OVERALL (xx)   | 3.16              | 3.01       | 2.96            | 4%                | 5%             |
| 29%                   | LEARNING AVERAGE        | 3.26              | 3.10       | 3.04            | 4%                | 5%             |
| ACADEMIC              |                         |                   |            |                 |                   |                |
| 32%                   | Expert lecturers        | 3.37              | 3.26       | 3.08            | 3%                | 7%             |
| 40%                   | Course content          | 3.26              | 3.14       | 3.06            | 3%                | 5%             |
| 36%                   | Good teachers           | 3.31              | 3.12       | 3.00            | 5%                | 8%             |
| 27%                   | Assessment              | 3.07              | 3.08       | 2.95            | 0%                | 3%             |
| 27%                   | Learning support        | 3.19              | 3.15       | 3.12            | 1%                | 2%             |
| 22%                   | Online library          | 3.40              | 3.24       | 3.09            | 4%                | 8%             |
| 27%                   | Physical library        | 3.38              | 3.20       | 3.05            | 4%                | 8%             |
| 26%                   | Performance feedback    | 2.98              | 3.02       | 2.91            | -1%               | 2%             |
| 25%                   | Technology              | 3.03              | 3.17       | 2.97            | -4%               | 1%             |
| 27%                   | Research                | 3.21              | 3.09       | 3.02            | 3%                | 5%             |
| 29%                   | Learning spaces         | 3.47              | 3.16       | 3.13            | 8%                | 9%             |
| 27%                   | Laboratories            | 3.52              | 3.18       | 3.09            | 9%                | 11%            |
| 23%                   | Marking criteria        | 3.09              | 3.00       | 2.95            | 2%                | 3%             |
| 21%                   | Class size              | 3.36              | 3.08       | 3.17            | 7%                | 5%             |
| 39%                   | Course organisation     | 3.09              | 3.03       | 2.87            | 2%                | 5%             |
| 39%                   | Quality lectures        | 3.31              | 3.08       | 2.94            | 6%                | 9%             |
| 28%                   | Virtual learning        | 3.12              | 3.15       | 3.04            | -1%               | 2%             |
| 21%                   | Multicultural           | 3.49              | 3.21       | 3.21            | 7%                | 7%             |
| 37%                   | Topic selection**       | NSV               | 3.14       | 3.01            | N/A               | N/A            |



## Benchmarking - wave on wave comparison



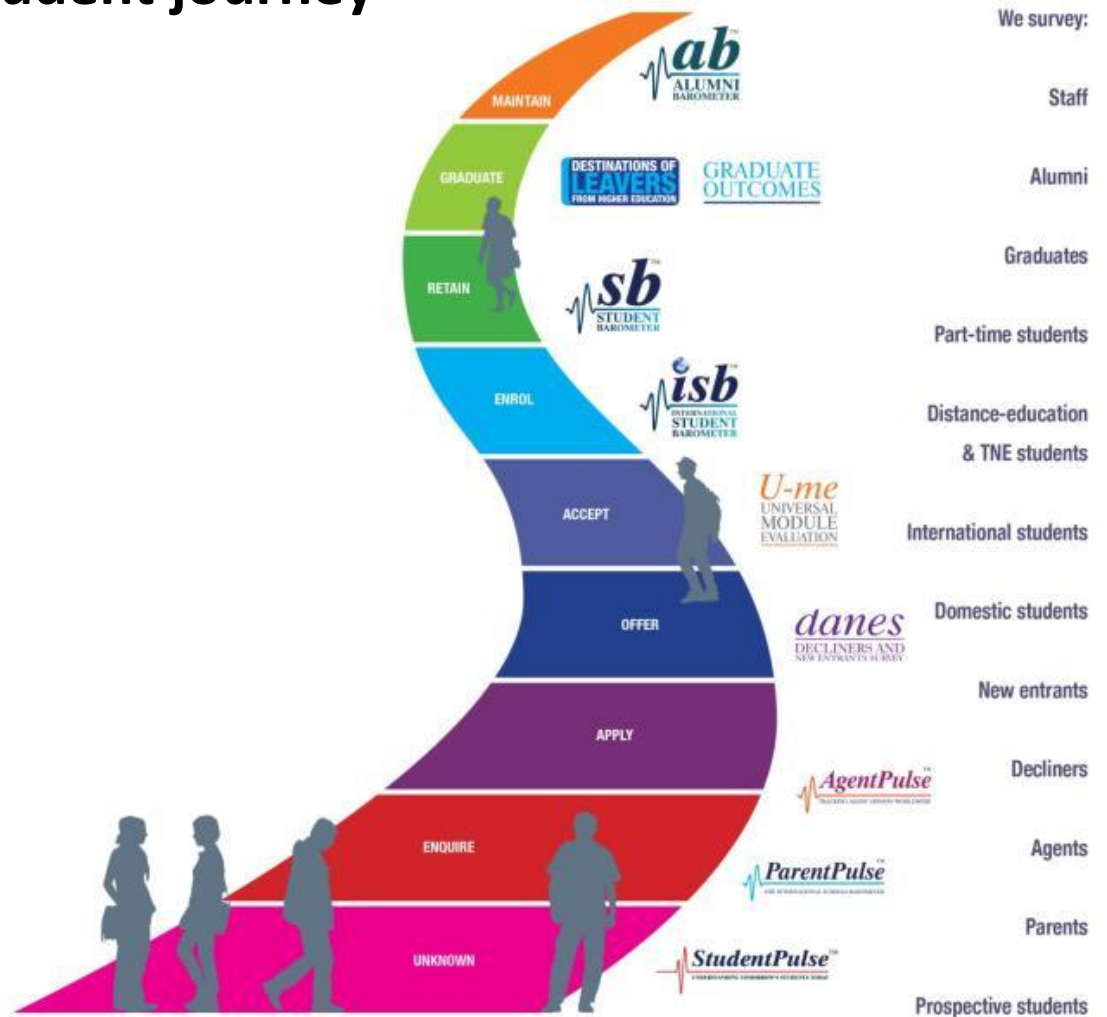
# Appendix

## About *i-graduate*

- The International Graduate Insight Group (i-graduate) is an independent benchmarking and research service, delivering comparative insights for the education sector worldwide: *your finger on the pulse of student and stakeholder opinion*
- The Student Barometer is the largest annual study of students in the world, with feedback from over 2 million respondents
- Used throughout the sector to target resourcing and investment in improving services, teaching and support for students
- i-graduate surveys implemented by 1,400 education institutions worldwide
- Running in 28 countries across 5 continents

## Understand the entire student journey with i-graduate

ESTABLISHED IN  
**2005**  
IN OVER  
**1400**  
INSTITUTIONS  
ACROSS  
**28**  
COUNTRIES  
FEEDBACK FROM  
**2 MILLION**  
STUDENTS



## *i-graduate's i-mark*

- Available to HE institutions worldwide taking part in the ISB or SB
- Instant and easy recognition of an institution's dedication to the student experience
- Use on website and promotional literature



**STUDENT BAROMETER™ PARTNER**  
**THE GLOBAL BENCHMARK FOR THE STUDENT EXPERIENCE**

*“We are using the i-mark on our admission webpages to show potential students that we use the ISB for program quality management and service development.”*

*ISB University Partner*

### Global ISB (152,464), Global SB (113,909), Global ISB-SB (266,373)

|   |                                   |  |                                       |
|---|-----------------------------------|--|---------------------------------------|
| Aberyswyth University   | Chinese University of Hong Kong   | George Brown College                                 | Karolinska Institute                  |
| Algonquin College   | College of New Calendonia         | Georgian College                                     | KDU University College                |
| Anglia Ruskin University                                      | College of the Rockies            | Glasgow Caledonian University                        | La Trobe University                   |
| Arizona State University                                      | Colorado State University         | Gonzaga University                                   | Lancaster University                  |
| Asia Pacific University of Technology & Innovation (APU)      | Coventry University               | Griffith University                                  | Lane Community College                |
| Aston University  | CQUniversity Australia            | Heinrich Heine Universität Düsseldorf                | Lappeenranta University of Technology |
| Australian Catholic University                                | Curtin University                 | HELP University                                      | Leeds Metropolitan University         |
| Australian School of Management                               | Deakin University                 | Heriot-Watt University - Dubai                       | Leiden University                     |
| Blue Mountains International Hotel Management School          | DePaul University                 | HU University of Applied Sciences                    | Linköping University                  |
| Bond University   | Durham College                    | Humber Institute of Technology and Advanced Learning | Liverpool John Moores University      |
| Bransenburgische Technische Universitte Cottbus -Senftenberg | Dusit Thani College               | IMC University of Applied Sciences, Krems            | London South Bank University          |
| Brunel University   | Edith Cowan University            | International Medical University Malaysia            | Lund University                       |
| Cardiff Metropolitan University                               | Erasmus University Rotterdam      | Iowa State University                                | Lyceum of the Philippines University  |
| Centennial College  | Fanshawe College                  | James Cook University                                | Macquarie University                  |
| C sar Ritz Colleges Switzerland                               | Flinders University               | James Cook University (Singapore)                    | Manchester Metropolitan University    |
| Chalmers University of Technology                             | Free University of Bozen, Bolzano | Johnson & Wales University                           | MCI Management Center Innsbruck       |
| Charles Darwin University                                     | Fresno State                      | J nk ping University                                 | Miami University                      |

## Global ISB (152,464), Global SB (113,909), Global ISB-SB (266,373)

|                                       |   |  |                                     |
|---------------------------------------|---|--|-------------------------------------|
| Monash University, Malaysia           | Seneca College of Applied Arts and Technology       | The Royal Veterinary College           | Universität Tübingen                |
| Murdoch University                    | Sheffield Hallam University                         | The University of Adelaide             | Université Laval                    |
| Newcastle University                  | Sheridan College                                    | The University of Adelaide (Singapore) | Universiti Teknologi PETONAS        |
| Northumbria University                | Simon Fraser University                             | The University of Edinburgh            | University College Birmingham       |
| Northwestern University               | Southern Cross University                           | University of Manchester               | University College Dublin           |
| Nova Scotia Community College         | Stenden University of Applied Sciences              | The University of Queensland           | University College London           |
| Plymouth University                   | Stockholm University                                | The University of Sheffield            | University for the Creative Arts    |
| Queen Margaret University             | Swinburne University of Technology (Sarawak Campus) | The University of Sydney               | University of Alberta               |
| Queen Mary University of London       | Taylor's College                                    | The University of the South Pacific    | University of Bedfordshire          |
| Queensland University of Technology   | Taylor's University, Lakeside Campus                | The University of Western Australia    | University of Birmingham            |
| Radboud University Nijmegen           | Teesside University                                 | The Vocational Training Council        | University of Bristol               |
| Republic Polytechnic                  | The Australian National University                  | Tilburg University                     | University of California, Sant Cruz |
| RMIT University                       | The Emirates Academy of Hospitality Management      | Trinity College Dublin                 | University of Canberra              |
| Robert Gordon University              | The George Washington University                    | UCSI University                        | University of Central Lancashire    |
| Royal Holloway, University of London  | The Hong Kong Polytechnic University                | Umeå University                        | University of Central Missouri      |
| Ruhr-Universität Bochum               | The Hong Kong University of Science and Technology  | Universita Cattolica del Sacro Cuore   | University of Chichester            |
| Saxion University of Applied Sciences | The Hotel School Sydney                             | Universität Konstanz                   | University of Cincinnati            |

## Global ISB (152,464), Global SB (113,909), Global ISB-SB (266,373)

|  |  |  |
|--|--|--|
| University of Colorado Denver            | University of Oxford                       | University of Waikato                          |
| University of Dundee                     | University of Pittsburgh                   | University of Warwick                          |
| University of East London                | University of Reading                      | University of Waterloo                         |
| University of Exeter                     | University of Roehampton                   | University of Western Sydney                   |
| University of Glasgow                    | University of South Australia              | University of Wisconsin-Milwaukee              |
| University of Gloucestershire            | University of Southern Queensland          | University of Wollongong                       |
| University of Groningen                  | University of St Andrews                   | University of York                             |
| University of Guelph                     | University of Strathclyde                  | Uppsala University                             |
| University of Illinois, Urbana-Champaign | University of Surrey                       | Utah State University                          |
| University of Melbourne                  | University of Tasmania                     | Valencia University                            |
| University of Minnesota                  | University of Technology, Sydney           | Victoria University                            |
| University of Missouri                   | University of Fraser Valley                | VU University Amsterdam                        |
| University of Nebraska–Lincoln           | University of the Sunshine Coast           | Western Michigan University                    |
| University of New Mexico                 | University of the West of England, Bristol | William Angliss Institute                      |
| University of Newcastle                  | University of Twente                       | William Blue College of Hospitality Management |
| University of Nottingham                 | University of Ulster                       |  |





# Questionnaire

## Not a full list of questions

### Background

- *Accommodation*
- *Funding and scholarships*
- *Level of study*
- *Area of study*
- *School/Faculty/Department*
- *Year of study*

### Pre-Arrival

- *Choice of destination*
- *Key influences*
- *Application process*
- *Visa Satisfaction*
- *Agents*

### Arrival Experience

- *Overall Satisfaction*
- *Rating of experience*

### Learning Experience

- *Overall Satisfaction*
- *Satisfaction with learning elements*

### Living Experience

- *Overall Satisfaction*
- *Satisfaction with living elements*

### Support Experience

- *Overall Satisfaction*
- *Relevance of services*
- *Satisfaction with services used*

### Recommendation & Reflections

- *Recommendation to others*

### Study Time

- *Weekly hours: studying and working*

### Future Plans

- *Employment*
- *Study*

| Terminology in Questionnaire   | Terminology in Report   |
|--|-------------------------|
| Assistance to obtain health insurance                                      | Health insurance        |
| Welcome/pickup at airport, railway, coach station                          | Welcome/ pick-up        |
| Academic registration  | Registration            |
| First night - getting to where I would stay                                | First night             |
| Formal welcome at the institution  | Formal welcome          |
| Internet access at my accommodation  | Internet access         |
| Institution orientation  | Institution orientation |
| Orientation (finding my way around the local area)                         | Local orientation       |
| Institution accounts/ finance department                                   | Finance office          |
| Setting up a bank account  | Bank account            |
| Accommodation office   | Accommodation office    |
| Condition of accommodation on arrival                                      | Accommodation condition |
| The social activities  | Social activities       |
| Making friends from my home country ( <i>International students only</i> ) | Home friends            |
| Making friends from this country   | Host friends            |
| Making friends from other countries  | Other friends           |
| Meeting academic staff   | Meeting staff           |
| Understanding how my course of study would work                            | Study sense             |

| Terminology in Questionnaire  | Terminology in Report |
|---|-----------------------|
| The quality of lectures ( <i>Undergraduate &amp; Masters students only</i> )                                  | Quality lecturers     |
| The subject area expertise of lecturers/ supervisors  | Expert lecturers      |
| The teaching ability of lecturers/ supervisors  | Good teachers         |
| The academic content of my program/ studies   | Course content        |
| The organisation and smooth running of the course ( <i>Undergraduate &amp; Masters students only</i> )        | Course organisation   |
| The level of research activity  | Research              |
| Academic staff whose English I can understand   | Academics' English    |
| Getting time from academic staff when I need it/ personal support with learning                               | Learning support      |
| Feedback on coursework/ formal written submissions  | Performance feedback  |
| Explanation of making/ assessment criteria  | Marking criteria      |
| Fair and transparent assessment of my work  | Assessment            |
| Guidance in topic selection and refinement by my supervisor ( <i>Masters &amp; PhD students only</i> )        | Topic selection       |
| Confidence about managing a research project as a result of my experience so far ( <i>PhD students only</i> ) | Managing research     |
| The quality of the lecture theatres and classrooms  | Learning spaces       |
| The quality of training facilities  | Training facilities   |

| The online library facilities  | Online library         |
|--|------------------------|
| The physical library facilities  | Physical library       |
| The learning technology (PCs, networking, etc)                                     | Technology             |
| Virtual learning environment (Blackboard/ WebCT/ Weblearn)                         | Virtual learning       |
| Advice and guidance on long-term job opportunities and careers from academic staff | Careers advice         |
| Learning that will help me get a good job  | Employability          |
| Opportunities for work experience/ work placements as a part of my studies         | Work experience        |
| Studying with people from other cultures   | Multicultural          |
| Help to improve my English language skills   | Language support       |
| Opportunities to teach ( <i>PhD students only</i> )                                | Opportunities to teach |
| The size of classes  | Size of classes        |
| Access to suitable accommodation   | Accommodation access   |
| The quality of accommodation   | Accommodation quality  |
| The cost of accommodation  | Accommodation cost     |
| The cost of living   | Living cost            |
| Feeling safe and secure  | Safety                 |
| Making friends from my home country ( <i>International students only</i> )         | Home friends           |
| Making friends from this country   | Host friends           |

| Terminology in Questionnaire   | Terminology in Report          |
|--|--------------------------------|
| Access to suitable accommodation   | Accommodation access           |
| The quality of accommodation   | Accommodation quality          |
| The cost of accommodation  | Accommodation cost             |
| The cost of living   | Living cost                    |
| Feeling safe and secure  | Safety                         |
| Making friends from my home country ( <i>International students only</i> )                     | Home friends                   |
| Making friends from this country   | Host friends                   |
| Making friends from other countries  | Other friends                  |
| Opportunities to experience the culture of this country ( <i>International students only</i> ) | Host culture                   |
| The sports facilities  | Sports facilities              |
| The social facilities  | Social facilities              |
| The social activities  | Social activities              |
| Internet access at my accommodation  | Internet access                |
| Making good contacts for the future  | Good contacts                  |
| The facilities for religious worship   | Worship facilities             |
| The surroundings outside the institution   | Good place to be               |
| The transport links to other places  | Transport links (other places) |

| Terminology in Questionnaire  | Terminology in Report       |
|---|-----------------------------|
| The availability of financial support/ bursaries etc.                                   | Financial support           |
| The opportunity to earn money while studying  | Earning money               |
| Immigration and visa advice from the institution ( <i>International students only</i> ) | Visa advice                 |
| Transport between institution locations   | Transport links institution |
| The institution's eco-friendly attitude to the environment                              | Eco-friendly attitude       |
| The design and quality of the campus buildings  | Campus buildings            |
| The quality of the external campus environment  | Campus environment          |

| Terminology in Standard Questionnaire                       | Terminology in Report |
|---|-----------------------|
| Campus eating places  | Catering              |
| IT and system support                                       | IT Support            |
| Student Advisory Service                                    | Student Advisory      |
| International Office ( <i>International students only</i> ) | International Office  |
| Students' Union   | Students' Union       |
| Health Centre   | Health Centre         |
| Institution accounts/finance department                     | Finance Office        |
| Institutions Clubs/Societies                                | Clubs/Societies       |
| Accommodation Office  | Accommodation Office  |
| Careers Advisory Service                                    | Careers Service       |
| Counselling Service   | Counselling           |
| Graduate School ( <i>Masters &amp; PhD students only</i> )  | Graduate School       |
| Halls of Residence welfare support                          | Halls Welfare         |
| Chaplaincy or multi-faith provision                         | Faith Provision       |
| Disability Support  | Disability Support    |



## For more information

Pauline Tang

CEO

M: +61-419-776 316

E: [accreditation@the-ice.org](mailto:accreditation@the-ice.org)

S: profile\_ceo

W: [www.the-ice.org](http://www.the-ice.org)